

**PERFORMANCE EVALUATION OF  
HORIZONTAL SLIDING WINDOW “3 ¼” SINGLE SLIDER LIFT OUT”  
FOR A&R SHERK MFG INC.**

**IN ACCORDANCE WITH:  
AAMA/WDMA/CSA 101/I.S.2/A440-22  
AND A440S1-2025**

Report to: A&R Sherk Mfg Inc.  
347061 4<sup>th</sup> Concession B  
Maxwell, ON  
NOC 1J0  
Canada

Attention: Alvin Sherk

Telephone: +1 519-270-1735  
Email: arsherkmfg23@gmail.com

New Report No.: 26-06-B0017-2N  
Original Report No.: 24-06-B0159-2N  
9 Pages, 1 Appendix

Re-Issue Proposal No.: 26-006-789288 RV1  
Original Proposal No.: 24-006-595232

Re-Issue Date: February 27, 2026  
Date: June 13, 2025

Product Manufacturer:	A&R Sherk Mfg Inc.
Product Type:	Horizontal Sliding Window
Product Series/Model:	3 ¼” Single Slider Lift Out
Primary Product Designator:	<b>Class R – PG1920 – Size tested 1600 mm x 1150 mm – Horizontal Sliding Window Class R – PG40– Size Tested 62.99 in x 45.98 in – HS</b>
Secondary Product Designator:	
Positive Design Pressure:	1920 Pa (40.10 psf)
Negative Design Pressure:	1920 Pa (40.10 psf)
Water Penetration Resistance:	290 Pa (6.06 psf) with & without screen
Air Infiltration/Exfiltration	Pass
Test Completion Date:	May 08, 2025
Report Number:	26-06-B0017-2N

## 1.0 INTRODUCTION

At the request of A&R Sherk Mfg Inc., Element Materials Technology Inc. was retained to evaluate the physical performance of a Horizontal Sliding Window identified as "3 1/4" Single Slider Lift Out", in accordance with AAMA/WDMA/CSA 101/I.S.2/A440-22 Standards, "NAFS – North American Fenestration Standard/Specification for windows, doors, and skylights" and A440S1-25 Canadian Supplement, as outlined in proposal number 26-006-789288 RV1.

*Note 1: These test methods are included in the Element ISO 17025 Scope of Accreditation under A2LA Certificate. No. 6524.01*

*Note 2: This report is re-issued in the name of A&R Sherk Mfg Inc., through written authorization from Gracious Living Innovations, to whom the original report was released. Element Original Report No.: 24-06-B0159-2N (Dated: June 13, 2025).*

Element Specimen No.: 24-06-B0159-2B  
Type: Horizontal Sliding Window  
Model: 3 1/4" Single Slider Lift Out  
Overall Window Size: 1600 mm x 1150 mm (62.99" x 45.28" x 4.12")  
Sampling: N/A

## 2.0 SAMPLE DESCRIPTION

The following sample description has been verified by Element. Details and drawings of the described test specimen, as provided by the manufacturer, have been included in Appendix A.

**Product Type:** Horizontal Sliding Window  
**Frame:** Single slider, lift out, extruded PVC, 1600 mm x 1150 mm x 104.7 mm (62.99" x 45.28" x 4.12")  
**Sash:** Extruded PVC, one, lift out, interior sash, 787 mm x 1032 mm x 37.80 mm (30.98" x 40.63" x 1.49")  
**Fixed Unit:** Extruded PVC, one, 815 mm x 1150 mm x 60.4 mm (32.09" x 45.28" x 2.38"), direct glazed unit with fixed meeting stile

**Joinery:**  
**Frame:** Welded, mitred corners  
**Sash:** Welded, mitred corners  
**Fixed Meeting Stile:** Fastened to frame with plastic brackets, one per end, each fastened with two #8 x 3/4" flat head screws, ends sealed with flexible sealant

**Installation:**  
**Test Buck:** Wood Buck  
**Adhesive:** Frame, adhered in buck with expanding structural adhesive  
**Interior Blind Stops:** Wood, four, one per frame member, cut 150 mm (5.91") short at each end, fastened to buck with 18 ga 1 1/2" wood staples  
**Exterior Blind Stops:** Wood, four, one per frame member, full length, fastened to buck with 18 ga 1 1/2" wood staples  
**Sealant:** Exterior frame perimeter blind stops sealed with flexible sealant

**Glazing Type:** Dual glazed, annealed, overall thickness 22 mm (0.87"), glass thickness 3 mm (0.12"), gas cavity size 16 mm (0.63"), GED intercept ultra u-channel metal spacer, dual sealed, argon filled gas cavity

<b>Glazing Method:</b>	Laid-in, wet glazed
Fixed Unit:	
Glazing Stop:	Extruded PVC, interior perimeter
Heel Bead:	Flexible sealant, interior glazing cavity, stiles and top rail
Setting Block:	Rubber, fourteen, 18.68 mm x 32.4 mm x 8.2 mm (0.74" x 1.28" x 0.32") Eight, interior glazing cavity, four per stile, 69 mm (2.72") from ends and 250 mm (9.84) c/c Six, interior glazing cavity, three per head/sill, 95 mm (3.74") from ends and centre
Back Bead:	Flexible sealant, exterior perimeter
Sash:	
Glazing Stop:	Extruded PVC, exterior perimeter
Setting Block:	Rubber, fourteen, 18.68 mm x 32.4 mm x 8.2 mm (0.74" x 1.28" x 0.32") Eight, interior glazing cavity, four per stile, 90 mm (3.54") from ends and 220 mm (8.66") c/c Six, interior glazing cavity, three per head/sill, 85 mm (3.35") from ends and centre
Back Bead:	Flexible sealant, interior perimeter
<b>Drainage/Ventilation:</b>	
Frame:	
Drain Slot:	Two, 25.7 mm x 5.25 mm (1.01" x 0.21"), sill, interior channel, at the ends One, 19.4 mm x 5.25 mm (0.76" x 0.21"), sill, interior channel, at center One, 19.1 mm x 3.2 mm (0.75" x 0.13"), sill, exterior channel, 30 mm (1.18") from meeting stile One, 31.6 mm x 3.2 mm (1.24" x 0.13"), sill, exterior channel, 30 mm (3.07") from pull jamb One, 31.6 mm x 3.2 mm (1.24" x 0.13"), sill, fixed unit glazing cavity, 78 mm (3.07") from fixed jamb Two, 26.3 mm x 6.3 mm (1.04" x 0.25"), sill, screen channel, at the ends Two, 31.6 mm x 3.2 mm (1.24" x 0.13"), sill, exterior face, 52 mm (2.05") from ends
Drain Slot with Eye-Lid Cover:	Two, 32.8 mm x 7.0 mm (1.29" x 0.28"), sill, exterior face, 113.1 mm (4.45") from ends
Sash:	
Drain Slot:	Two, 9.5 mm x 3.2 mm (0.37" x 0.13"), bottom rail, interior glazing cavity, 32.0 mm (1.26") from ends Two, 9.5 mm x 3.2 mm (0.37" x 0.13"), bottom rail, exterior edge, 4.5 mm (0.18") from ends
<b>Reinforcement:</b>	None
<b>Weather-Stripping:</b>	
Frame:	
Pile with High Fin:	One row, 4 mm (0.16") high pile, 5 mm (0.20") high fin, full perimeter, interior upstanding leg, exterior face, kerf inserted One row, 4 mm (0.16") high pile, 5 mm (0.20") high fin, fixed meeting stile, interior face, kerf inserted One row, 4 mm (0.16") high pile, 5 mm (0.20") high fin, fixed meeting stile, glazing stop, interior face, kerf inserted
Sash:	
Pile with High Fin:	One row, 4 mm (0.16") high pile, 5 mm (0.20") high fin, full perimeter, exterior face, kerf inserted
Bulb:	Flexible PVC, one row, 6 mm (0.24") diameter, pull stile, outer edge, kerf inserted, ends sealed with flexible sealant

**Add-ons**

Slider Track: Extruded PVC, one, 1559 mm x 41 mm (61.38" x 1.61"), sill interior channel, snap in

**Hardware:**

Lock: Painted metal, two, cam lock, operable meeting stile, 235 mm (9.25") from ends, each fastened with two #6 x 1/2" flat head screws

Keeper: Painted metal, two, fixed meeting stile, glazing stop, 228 mm (8.98") from ends, fastened with #6 x 1" flat head screws

Rollers: Metal rollers with plastic casing, two, 34.6 mm x 9.5 mm (1.36" x 0.37"), bottom rail of sash, 34 mm (1.34") from ends, slot-in

**Screen:**

Aluminium, 1490 mm x 995 mm x 10 mm (58.66" x 39.17" x 0.39"), roll-formed, external plastic corner keys with integrated spring steel retainers, fibreglass mesh, T-spline, interserted into screen channel

**3.0 TEST EQUIPMENT**

<b>Table 1 – Element Test Equipment</b>		
<b>Equipment Description:</b>	<b>Asset No. (MII):</b>	<b>Calibration Due Date:</b>
Pressure Transducer	P00029	2026-01-06
Pressure Transducer	P00208	2026-01-13
String Gauge Window Wall	P00031	2025-10-31
String Gauge Window Wall	P00034	2025-10-31
String Gauge Window Wall	P00040	2025-10-31
AWS System	P00042	2025-05-19
Spray Rack	B16727	2025-05-19
Digital Caliper	P00212	2026-03-03
Stopwatch	P00153	2026-03-07
Force Gauge	B17457	2025-05-03
Load Cell	P00203	2025-12-16
Load Cell	B12007	2025-11-19
Dial Indicator	B00566 BS	2025-12-05



4.0 TEST RESULTS:

Table 1 – Summarized Testing Results in Accordance with AAMA/WDMA/CSA 101/I.S.2/A440-22 and A440S1-25 Canadian Supplement					
Test	Requirements		Results		Rating
<b>Operating Force</b> (Clause 8.3.1)  <i>Per</i> <b>ASTM E2068</b>  <b>Test Date:</b> March 16, 2025	<b>Operating Device:</b> The maximum force to initiate and maintain the sash shall be less than the following, N (lbf):		Operating Device, Measured Force, N (lbf):		<b>PASS</b>
	Maximum Force:	155 (34.85)	Measured Force:	43.3 (9.73)	
	<b>Latching Device:</b> The maximum force required to open and close the latch shall be less than the following, N (lbf):		Latching Device, Measured Force N (lbf):		<b>PASS</b>
	Maximum Force:	100 (22.48)	Open:	27.1 (6.08)	
<b>Air Leakage Resistance</b> (Clause 8.3.2)  <i>Per</i> <b>ASTM E283</b>  <b>Test Date:</b> March 17 2025	Allowable rate of air leakage shall be less than or equal to the following, L/s.m <sup>2</sup> (cfm/ft <sup>2</sup> ), at the subsequent test pressure:		Test Area, m <sup>2</sup> (ft <sup>2</sup> ): 1.8 (19.81)		<b>PASS</b>
			Measured Air Leakage Rate, L/s.m <sup>2</sup> (cfm/ft <sup>2</sup> ):		
	Test Pressure, Pa (psf):	75 (1.57)	Infiltration:	0.04 (0.009)	
	Maximum Allowable	1.5 (0.30)	Exfiltration:	0.01 (0.002)	
<b>Water Penetration Resistance</b> (Clause 8.3.3)  <i>Per</i> <b>ASTM E547</b>  <b>Test Date:</b> March 17, 2025	No water leakage shall be observed at the following specified pressure differential, Pa (psf):		No water leakage was observed at the following specified cyclic pressure differential, Pa (psf):		<b>PASS</b>  Gateway <b>(R15-HS)</b>  Optional Performance <b>(R40-HS)</b>
	<b>Gateway Performance:</b>		<b>Gateway Performance:</b>		
	Test Pressure:	140 (2.92)	Test Pressure:	140 (2.92)	
	<b>Optional Performance:</b>		<b>Optional Performance:</b>		
	Test Pressure:	290 (6.06)	Test Pressure: With & Without Screen	290 (6.06)	



**Table 1, Continued - Summarized Testing Results in Accordance with AAMA/WDMA/CSA 101/I.S.2/A440-22 and A440S1-25 Canadian Supplement**

Test	Requirements	Results	Rating					
<b>Uniform Load Deflection</b> (Clause 8.3.4.2)  Per ASTM E330  Test Date: March 18 2025	The deflection of the unsupported span must be measured and recorded at the specified test pressure, Pa (psf)	Measured net deflection of Fixed Meeting Stile, mm (in):	<b>PASS</b>  Gateway <b>(R15-HS)</b>  Optional Performance <b>(R40-HS)</b>					
	Allowable deflection, mm (in): Report Only	Span: 1032 (40.63)						
	<b>Gateway Performance:</b>	Positive: 15.9 (0.63)						
	Test Pressure: ±720 (15.04)	Negative: 17.6 (0.69)						
	<b>Optional Performance:</b>	Left Intentionally Blank						
	Test Pressure: ±1920 (40.10)							
<b>Uniform Load Structural</b> (Clause 8.3.4.3)  Per ASTM E330  Test Date: March 18 2025	There shall be no permanent damage to the window components after the following specified test pressures, Pa (psf). No member shall have permanent deflect more that 0.4% of span.	Measured permanent deflection of Fixed Meeting Stile, mm (in):	<b>PASS</b>  Gateway <b>(R15-HS)</b>  Optional Performance <b>(R40-HS)</b>					
	Allowable permanent deflection, mm (in): 4.13 (0.16)	Span: 1032 (40.63)						
	<b>Gateway Performance</b>	Positive: 0.4 (0.02)						
	Test Pressure: ±1080 (22.56)	Negative: 0.3 (0.01)						
	<b>Optional Performance</b>	Left Intentionally Blank						
	Test pressure: ±2880 (60.15)							
<b>Forced-Entry Resistance</b> (Clause 8.3.5)  Per ASTM F588  Test Date: May 08, 2025	No entry shall be gained during the following test sequence:				For Type A Window no entry was gained during the following specified test sequence:		<b>PASS</b>  Grade 20	
	Load Identification	Grade Loads, N (lbf)				L1		No Entry
		10	20	30	40			
	Disassembly T1:	5 min		10 min		L1 + L2		No Entry
		L1:	667 (150)	890 (200)	1112 (250)			
	L2:	333 (75)	445 (100)	556 (125)	667 (150)	L1 + L2		No Entry
	L3:	111 (25)	155 (35)	222 (50)	267 (60)	L1 + L2 + L3 + Lift:		No Entry
	Manipulation T1:	5 min		10 min		Manipulation T1:		No Entry



Table 1, Continued - Summarized Testing Results in Accordance with AAMA/WDMA/CSA 101/I.S.2/A440-22 and A440S1-25 Canadian Supplement					
Test	Requirements		Results		Rating
<b>Deglazing</b>  (Clause 8.3.6.2)  <b>Test Date:</b> May 08, 2025	The panel shall be operable and there shall be no glass breakage or disengagement of glazing materials from panel frame after the application following test loads, N(lbf):		Measured Panel deflection, mm (in):		<b>PASS</b>
			Member:	Deflection:	
			Top Rail:	0.5 (0.020)	
			Bottom Rail:	0.4 (0.015)	
			Stiles test load:	320 (71.94)	
Rails test load:	230 (51.71)	Meeting Stile:	0.2 (0.008)		
<b>Insect Screen Serviceability</b> (Canadian Supplement Section 5.1) Per ASTM E1748  <b>Test Date:</b> May 08, 2025	There shall be no disengagement or deformation of screen members after the application of the following test load, N (lbf):		No disengagement or deformation of screen members was observed after the application of test load		<b>PASS</b>

**5.0 MODIFICATIONS**

No modification was made to the Gracious Living Innovations Inc, Horizontal Sliding Window "3 1/4" Single Slider Lift Out" Element Specimen No.: 24-06-B0159-2B, during testing to achieve the results stated in this report:



## 6.0 CONCLUSION

Based on the results of the testing summarised in Table 1, the A&R Sherk Mfg Inc., Horizontal Sliding Window "3 1/4" Single Slider Lift Out" Element Specimen No.: 24-06-B0159-2B met the following as outlined in the AAMA/WDMA/CSA 101/I.S.2/A440-22 and A440S1-25

*Note: This report is re-issued in the name of A&R Sherk Mfg Inc., through written authorization from Gracious Living Innovations, to whom the original report was released. Element Original Report No.: 24-06-B0159-2N (Dated: June 13, 2025).*

### Performance Rating

- Operating Force Pass
- Air Leakage Resistance Pass
- Water Penetration Resistance 290 Pa (6.06 psf) with & without screen
- Uniform Load Deflection ±1920 Pa (40.10 psf)
- Uniform Load Structural ±2880 Pa (60.15 psf)
- Forced Entry Resistance Grade 20
- Deglazing Test Pass
- Insect Screen Serviceability Pass

Product Manufacturer:	A&R Sherk Mfg Inc.
Product Type:	Horizontal Sliding Window
Product Series/Model:	3 1/4" Single Slider Lift Out
Primary Product Designator:	Class R – PG1920 – Size tested 1600 mm x 1150 mm – Horizontal Sliding Window Class R – PG40– Size tested 64.96 in x 45.28 in – HS
Secondary Product Designator:	
Positive Design Pressure:	1920 Pa (40.10 psf)
Negative Design Pressure:	1920 Pa (40.10 psf)
Water Penetration Resistance:	290 Pa (6.06 psf) with & without screen
Air Infiltration/Exfiltration	Pass
Test Completion Date:	May 08, 2025
Report Number:	26-06-B0017-2N


## 7.0 REPORT REVISION SUMMARY

<u>Revision No:</u>	<u>Date:</u>	<u>Description of Revisions:</u>
24-06-B0159-2N	June 13, 2025	Original Document
26-06-B0017-2N	February 27, 2026	Report re-issued to <b>A&amp;R Sherk Mfg Inc.</b>

### Reported by:

  
Emmanuel Siapno, 289-888-4880  
Senior Testing Technician, Building Systems  
Building Science Division

### Reviewed by:

  
Scott Hallam, B.Eng., 289-633-6601  
Manager, Building Systems  
Building Science Division

**ACCREDITATION:** (A2LA 6524-01, 02, 03)

*This report is related only to the sample identified and shall not be reproduced, except in full, without approval and is covered under Element Materials Technology Canada Inc. Standard Terms and Conditions of Contract, which is accessible at [www.element.com](http://www.element.com), or by calling 1-866-263-9268. Direct readings reported form the basis for acceptance or rejection (pass/fail) and to not take into account or incorporate uncertainty.*

**APPENDIX A**

Manufacturer's Detail Drawings

(12 Pages)

BILL OF MATERIALS Single Slider AURA 9000						
ITEM NO.	DESCRIPTION	PART NO.	QUANTITY	CUTTING FORMULA		SOURCE
				RFN'CE	DEDUCT	
	<b>FRAME</b>					
1	SS HEADER (Head)	22005F/22005N	1	Width	0.000	GLI
2	SS STILL (Sill)	22005F/22005N	1	Width	0.000	GLI
3	SS MAIN FRAME (Jamb)	22005F/22005N	2	Height	0.000	GLI
4	SS TRACK	42001	1	Width	-1.625	GLI
5	MULLION FRAME	22006	1	Width/2	-3.563	GLI
	<b>SASH</b>					
6	MAIN SASH	34001	2	Width/2	-0.500	GLI
7	PULL RAIL	34005	1	Height	-2.813	GLI
8	LOCK RAIL	34003	1	Height	-2.813	GLI
9	GLAZING 7/8- (For Fixed)	50002	2	Width/2	-3.063	GLI
10	KEEP GLAZING 7/8 - (For Fixed))	50102	1	Height	-3.750	GLI
11	GLAZING 7/8- (For Fixed)	50002	1	Height	-3.750	GLI
12	GLAZING 7/8 (For Sash)	50002	2	Width/2	-3.063	GLI
13	GLAZING 7/8 (For Sash)	50002	2	Height	-3.750	GLI
14	BULB SEAL FOR SILL	B2424	1	Width/2	-2.813	ULTRAFAB



<b>BILL OF MATERIALS</b> <b>Single Slider AURA 9000</b>				
ITEM NO.	DESCRIPTION	QUANTITY	PART NO.	SOURCE
	<b>HARDWARE:</b>			
15	LOCK & KEEPER	1 or 2	679207 / 677120	DECO PRODUCTS
16	SETTING BLOCK	12	1.25 X 7/8" X 1/8"	LAMATEK INC
17	WEATHERSTRIP	AS REQ.	W2325ING000G	ULTRAFAB
18	MEETING RAIL PAD	2	250500WHAD1250	ULTRAFAB
19	MULLION CLIP	2	00202-C002	SIL PLASTIC
20	WEEP HOLE COVER	2	65605	ASHLAND
21	ROLLERS W/HOUSING	2	#11386	VISION INDUSTRIES
22	<b>SCREW:</b>			MERCHANTS FASTENER
	FOR LOCK	2 or 4	#6X1 PH.FL.HD	
	FOR KEEPER	2 or 4	#6X1 1/4 PH.FL.HD	
	FOR MULLION CLIP	8	#6 X 5/8 PH.FL. 410SS	
	FOR REINFORCEMENT	2 - 8	#4 X 1/2 PH.FL.HD	



Tested sample is non-reinforced unit, exclude from consideration (I.K)

BILL OF MATERIALS Single Slider AURA 9000				
ITEM NO.	DESCRIPTION	QUANTITY	PART NO.	SOURCE
	<b>GLASS:</b>			
23	GLASS	2	7/8" IG UNIT	CARDINAL/IN HOUSE
24	SILICONE	AS REQ.	1199 CLEAR	DOW CORNING
	<b>SCREEN:</b>			
25	SCR. FRAME - HANDLE	1	SCL516HLRRAW-01	HYGRADE
26	SCR. FRAME - PLAIN	1+2	SC516AW-01	HYGRADE
27	SCR. CORNERS PLAIN	2	CS2233	RODON
28	SCR. CORNERS W/STOP	2	CS2518	RODON
29	STAINLESS STEEL SPRINGS	2	9183X25	ADEPT CORPORATION
30	SCREEN FABRIC	AS REQ.	MESH	PHIFER INC.
31	SCREEN SPLINE	AS REQ.	.140HSS	DAPA PRODUCTS INC
	<b>REINFORCEMENT (For SS 39 1/4 and Taller)</b>			
<del>32</del>	<del>FOR LOCK RAIL</del>	<del>1</del>	<del>CG10HR01</del>	<del>BRT EXTRUSIONS</del>
<del>33</del>	<del>FOR MULLION</del>	<del>1</del>	<del>CG10HR02</del>	<del>BRT EXTRUSIONS</del>
	RECTANGULAR GRID PAINTED ALUMINUM			
	MIN SIZE: 26" X 15"			
	MAX SIZE: 78" X 60"			

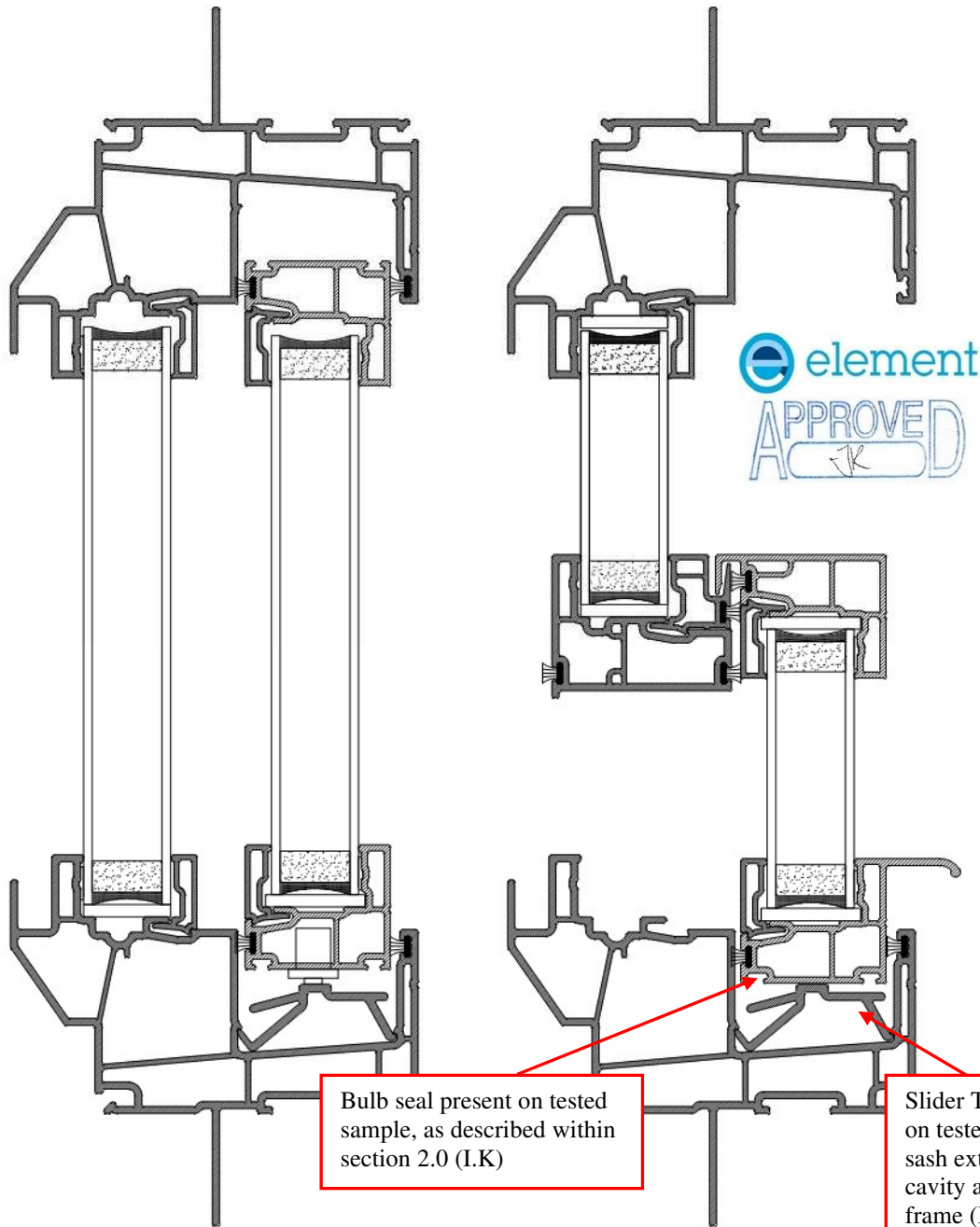


APPROVED BY:



This document and the information contained is owned by and proprietary to GRACIOUS LIVING INNOVATIONS. By receipt hereof, the holder agrees not to use the information, disclose it to any third parties nor reproduce this document without the prior written consent of GRACIOUS LIVING INNOVATIONS, and agrees to return this document forthwith upon request.

DATE:



TOLERANCES: UNLESS SPECIFIED  
X.XX = PLUS/MINUS 0.015"  
X.XXX = PLUS/MINUS 0.010"  
X.XXXX = PLUS/MINUS 0.005"

**3 1/4" Single Slider Lift Out**  
**7/8" Dual I.G. - Assembly Cross Sections**

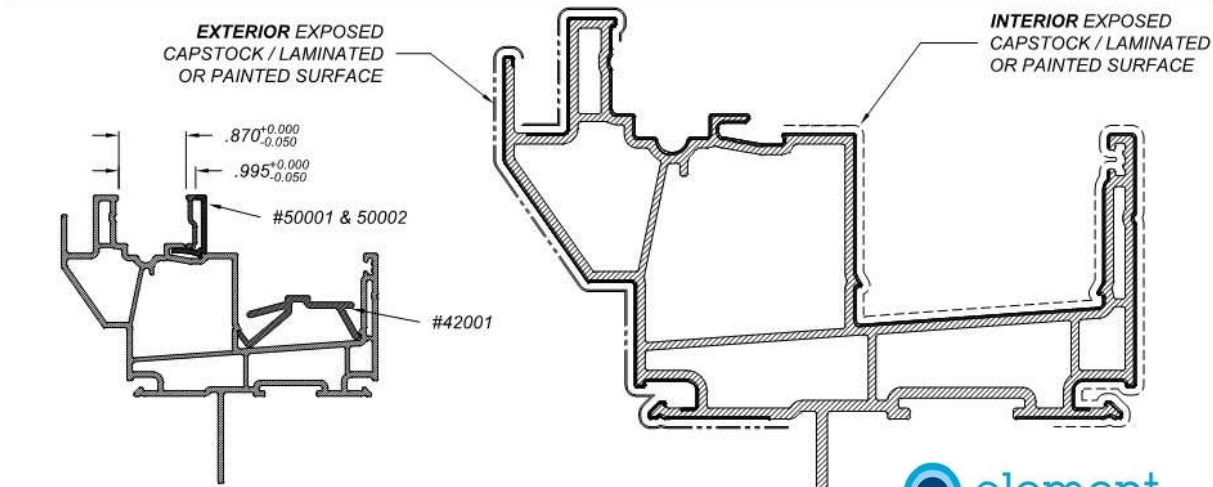
COLOUR: As specified	REVISION: Current	DIE NUMBER:	DWG NO.: SSLOGASS-01
MATERIAL: As specified	SCALE: 1 : 1	DRAWN BY:	DATE: 09-01-2024
		CUSTOMER PART NUMBER:	

APPROVED BY:

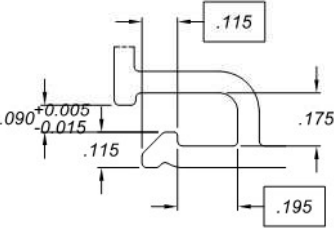


This document and the information contained is owned by and proprietary to GRACIOUS LIVING INNOVATIONS. By receipt hereof, the holder agrees not to use the information, disclose it to any third parties or reproduce this document without the prior written consent of GRACIOUS LIVING INNOVATIONS, and agrees to return the document forthwith upon request.

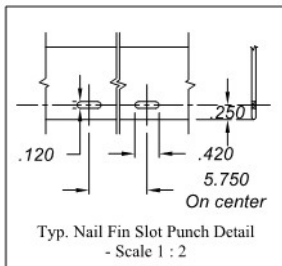
DATE:



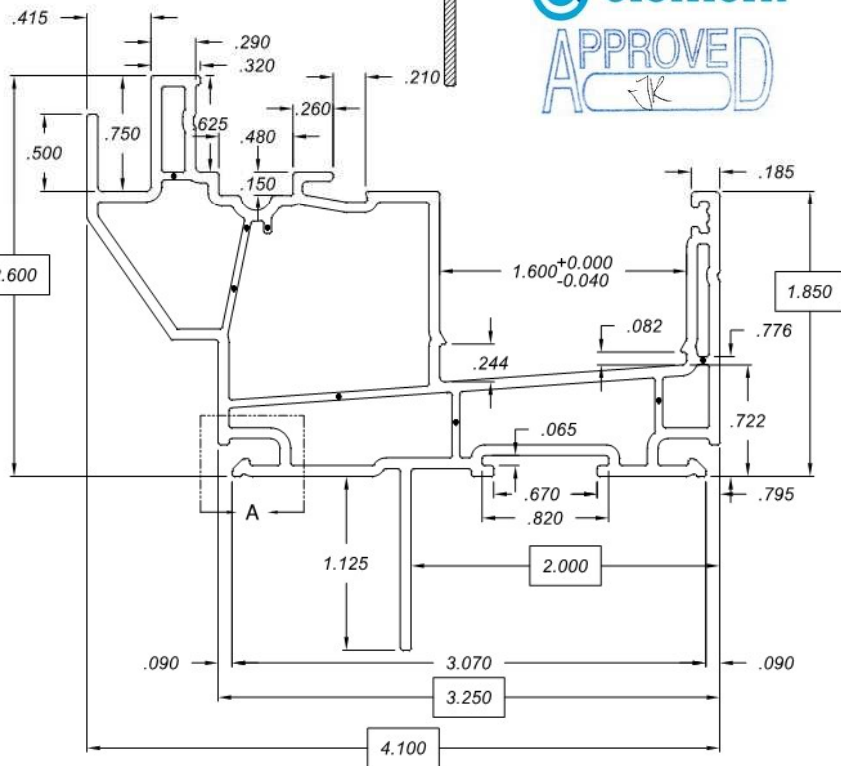
APPLICATIONS DETAIL  
SCALE 1 : 2



Detail A (Scale 2 : 1)  
Typical Interior & Exterior  
Unless Otherwise Specified



Typ. Nail Fin Slot Punch Detail  
- Scale 1 : 2



WALL THICKNESS: UNLESS SPECIFIED  
NOMINAL = 0.070"  
● = 0.050"

RADIUS NOTES: unmarked = 0.015" / a = 0.010" / b = 0.020" / c = 0.030" / d = 0.060" / f = full / s = Sharp

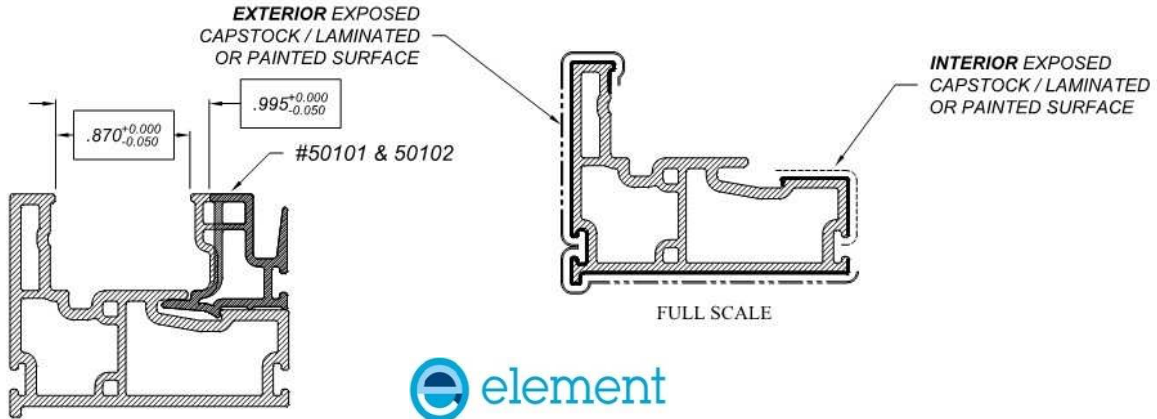
TOLERANCES: UNLESS SPECIFIED X.XX = PLUS/MINUS 0.015" X.XXX = PLUS/MINUS 0.010" X.XXXX = PLUS/MINUS 0.005"		<b>3 1/4" SSL Frame w/ Nail Fin Part Drawing</b>	
COLOUR: As specified	REVISION: A3 - Revised die, dwg number & capstock surfaces	DIE NUMBER: 22005F	DWG NO.: SSL22005
MATERIAL: Rigid P.V.C.	SCALE: 1 : 1	DRAWN BY:	CUSTOMER PART NUMBER: DATE: 06-01-2025

APPROVED BY:

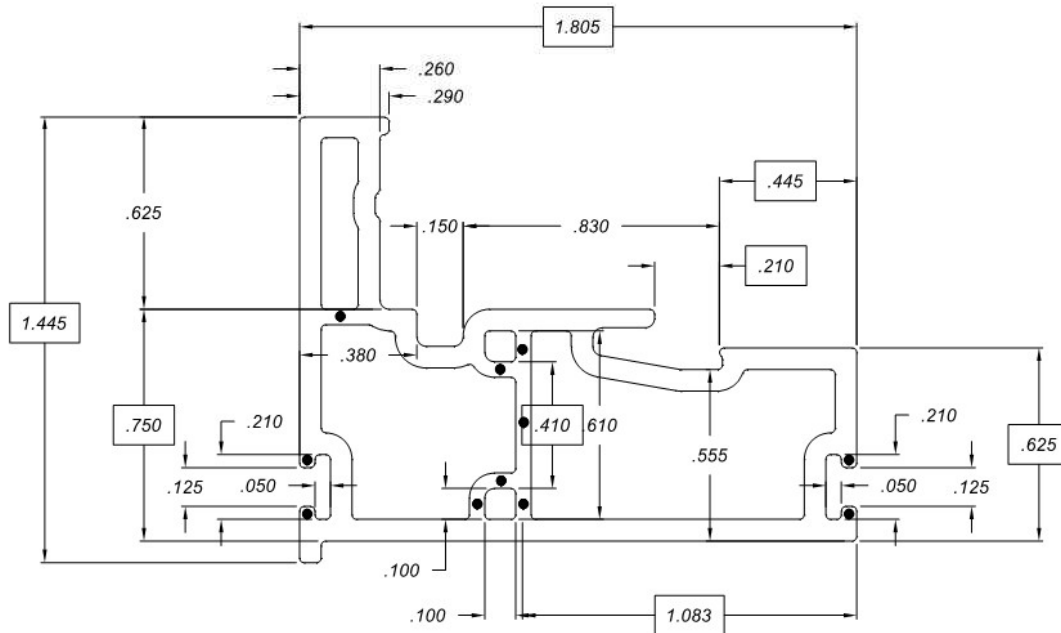


This document and the information contained is owned by and proprietary to GRACIOUS LIVING INNOVATIONS. By receipt hereof, the holder agrees not to use the information, disclose it to any third parties nor reproduce this document without the prior written consent of GRACIOUS LIVING INNOVATIONS, and agrees to return the document forthwith upon request.

DATE:



APPLICATIONS DETAIL  
SCALE 1 : 1



WALL THICKNESS: UNLESS SPECIFIED  
NOMINAL = 0.070"  
● = 0.050"

RADIUS NOTES: unmarked = 0.015" / a = 0.010" / b = 0.020" / c = 0.030" / d = 0.060" / f = full / s = Sharp

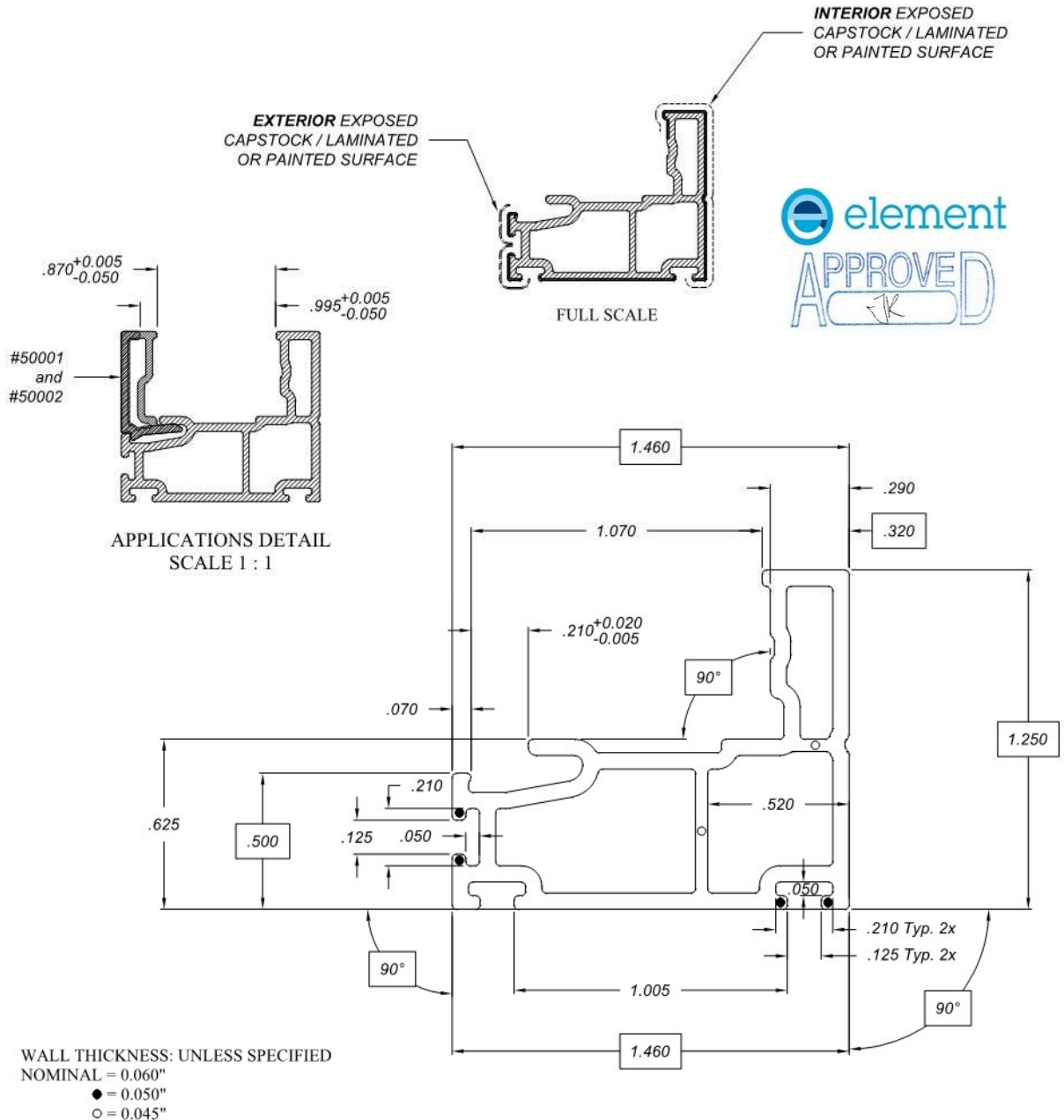
TOLERANCES: UNLESS SPECIFIED X.XX = PLUS/MINUS 0.015" X.XXX = PLUS/MINUS 0.010" X.XXXX = PLUS/MINUS 0.005"			
<b>SHSS Mullion Frame Part Drawing</b>			
COLOUR: <b>As specified</b>	REVISION: <b>A3 - Revised die, dwg number &amp; capstock surfaces</b>	DIE NUMBER: <b>22006</b>	DWG NO.: <b>SHF22006</b>
MATERIAL: <b>Rigid P.V.C.</b>	SCALE: <b>2 : 1</b>	DRAWN BY:	CUSTOMER PART NUMBER: DATE: <b>06-01-2025</b>

APPROVED BY:



This document and the information contained is owned by and proprietary to GRACIOUS LIVING INNOVATIONS. By receipt hereof, the holder agrees not to use the information, disclose it to any third parties nor reproduce this document without the prior written consent of GRACIOUS LIVING INNOVATIONS, and agrees to return the document forthwith upon request.

DATE:



RADIUS NOTES: unmarked = 0.015" / a = 0.010" / b = 0.020" / c = 0.030" / d = 0.060" / f = full / s = Sharp

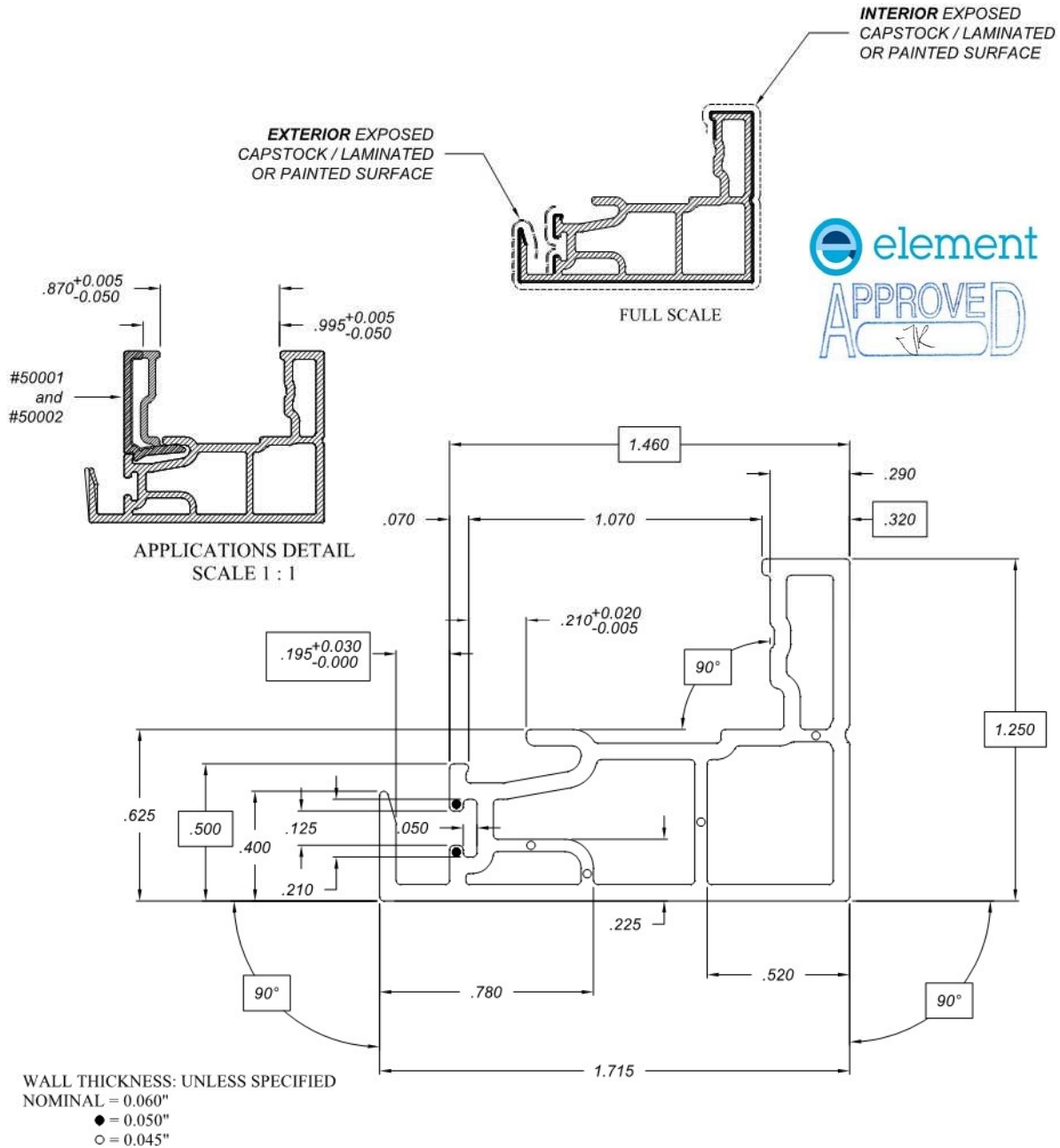
TOLERANCES: UNLESS SPECIFIED X.XX = PLUS/MINUS 0.015" X.XXX = PLUS/MINUS 0.010" X.XXXX = PLUS/MINUS 0.005"			
<b>H/S Main Sash                  Part Drawing</b>			
COLOUR: As specified	REVISION: A3 - Revised die, dwg number & capstock surfaces.	DIE NUMBER: 34001	DWG NO.: HSS34001
MATERIAL: Rigid P.V.C.	SCALE: 2 : 1	DRAWN BY:	CUSTOMER PART NUMBER: DATE: 06-01-2025

APPROVED BY:



This document and the information contained is owned by and proprietary to GRACIOUS LIVING INNOVATIONS. By receipt hereof, the holder agrees not to use the information, disclose it to any third parties nor reproduce this document without the prior written consent of GRACIOUS LIVING INNOVATIONS, and agrees to return the document forthwith upon request.

DATE:



RADIUS NOTES: unmarked = 0.015" / a = 0.010" / b = 0.020" / c = 0.030" / d = 0.060" / f = full / s = Sharp

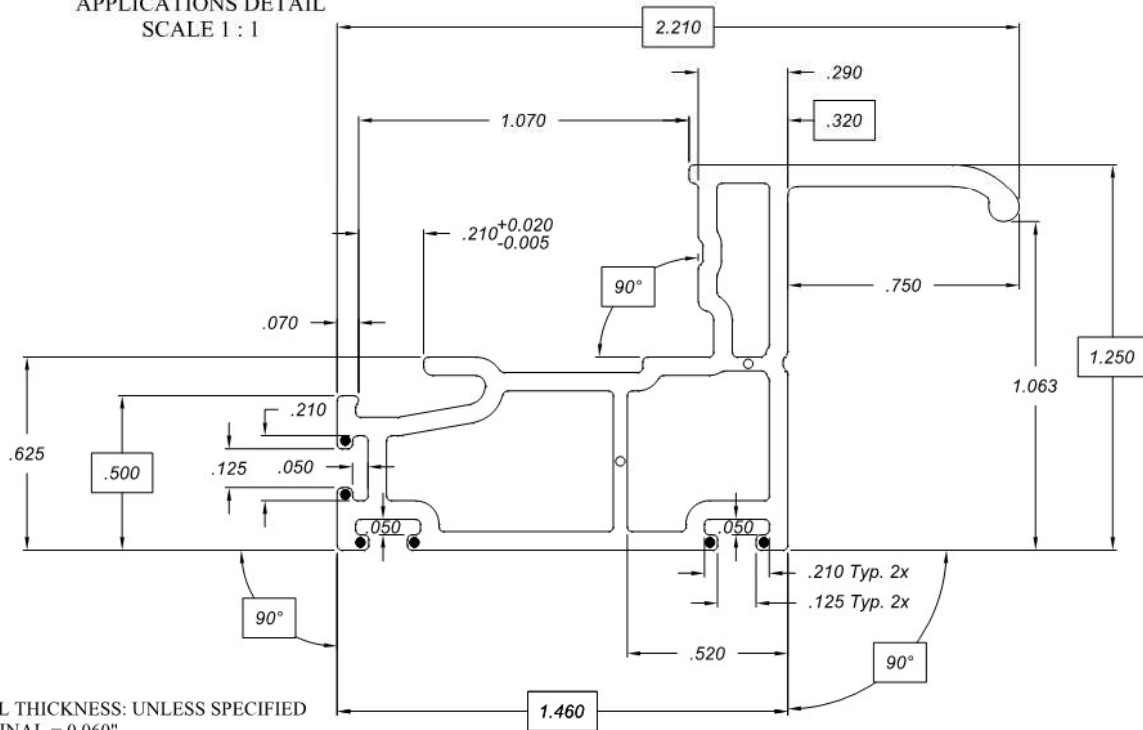
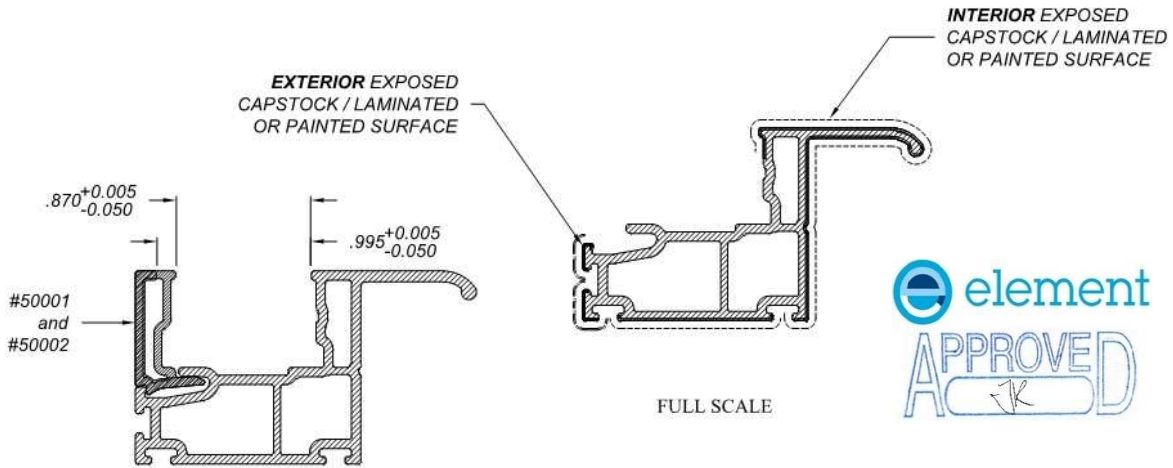
TOLERANCES: UNLESS SPECIFIED X.XX = PLUS/MINUS 0.015" X.XXX = PLUS/MINUS 0.010" X.XXXX = PLUS/MINUS 0.005"			
<b>H/S Lock Sash Part Drawing</b>			
COLOUR: As specified	REVISION: A3 - Revised die, dwg number & capstock surfaces	DIE NUMBER: 34003	DWG NO.: HSS34003
MATERIAL: Rigid P.V.C.	SCALE: 2 : 1	DRAWN BY:	CUSTOMER PART NUMBER: DATE: 06-01-2025

APPROVED BY:



This document and the information contained is owned by and proprietary to GRACIOUS LIVING INNOVATIONS. By receipt hereof, the holder agrees not to use the information, disclose it to any third parties nor reproduce this document without the prior written consent of GRACIOUS LIVING INNOVATIONS, and agrees to return the document forthwith upon request.

DATE:



WALL THICKNESS: UNLESS SPECIFIED  
 NOMINAL = 0.060"  
 ● = 0.050"  
 ○ = 0.045"

RADIUS NOTES: unmarked = 0.015" / a = 0.010" / b = 0.020" / c = 0.030" / d = 0.060" / f = full / s = Sharp

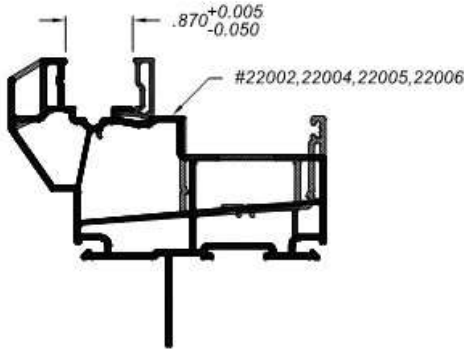
TOLERANCES: UNLESS SPECIFIED X.XX = PLUS/MINUS 0.015" X.XXX = PLUS/MINUS 0.010" X.XXXX = PLUS/MINUS 0.005"		<b>H/S Pull Sash          Part Drawing</b>	
COLOUR: <b>As specified</b>	REVISION: <b>A3 - Revised die, dwg number &amp; capstock surfaces</b>	DIE NUMBER: <b>34005</b>	DWG NO.: <b>HSS34005</b>
MATERIAL: <b>Rigid P.V.C.</b>	SCALE: <b>2 : 1</b>	DRAWN BY:	CUSTOMER PART NUMBER: <b>DATE: 06-01-2025</b>

APPROVED BY:

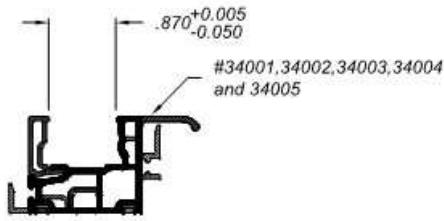
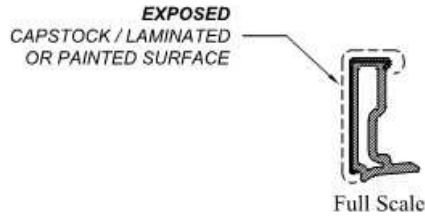


This document and the information contained is owned by and proprietary to GRACIOUS LIVING INNOVATIONS. By receipt hereof, the holder agrees not to use the information, disclose it to any third party nor reproduce this document without the prior written consent of GRACIOUS LIVING INNOVATIONS, and agrees to return this document to the issuer upon request.

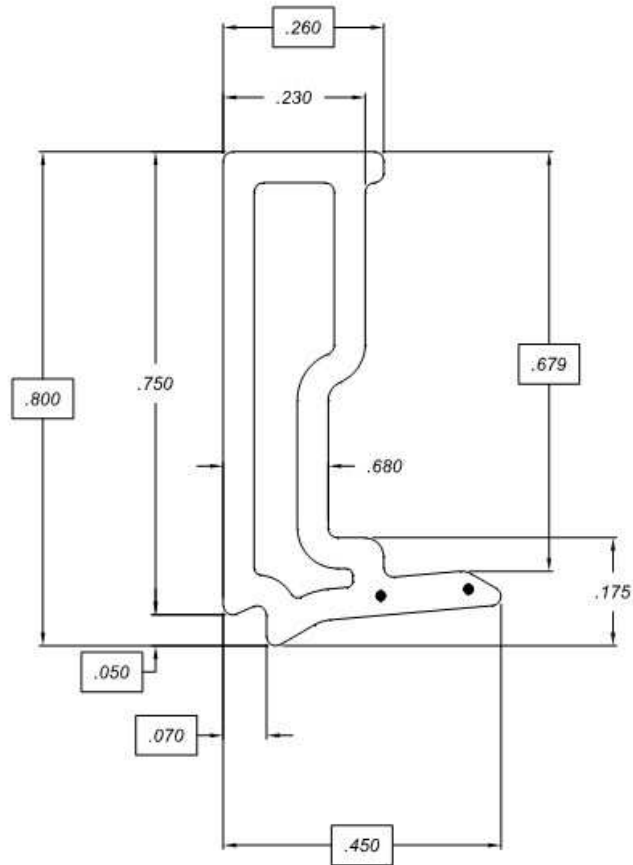
DATE:



APPLICATIONS DETAIL  
 SCALE 1 : 2



APPLICATIONS DETAIL  
 SCALE 1 : 2



WALL THICKNESS: UNLESS SPECIFIED  
 NOMINAL = 0.050"  
 ● = 0.060"

RADIUS NOTES: unmarked = 0.015" / a = 0.010" / b = 0.020" / c = 0.030" / d = 0.060" / f = full / s = Sharp

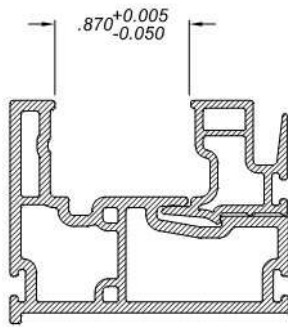
TOLERANCES: UNLESS SPECIFIED X.XX = PLUS/MINUS 0.015" X.XXX = PLUS/MINUS 0.010" X.XXXX = PLUS/MINUS 0.005"		<b>Glass Stop "B"          Part Drawing</b>	
COLOUR: <b>As specified</b>	REVISION: <b>A3- Revised die and dwg number</b>	DIE NUMBER: <b>50002</b>	DWG NO.: <b>GS50002</b>
MATERIAL: <b>Rigid P.V.C.</b>	SCALE: <b>4 : 1</b>	DRAWN BY:	CUSTOMER PART NUMBER: <b>06-01-2025</b>

APPROVED BY:



This document and the information contained is owned by and proprietary to GRACIOUS LIVING INNOVATIONS. By receipt hereof, the holder agrees not to use the information, disclose it to any third parties nor reproduce this document without the prior written consent of GRACIOUS LIVING INNOVATIONS, and agrees to return the document forthwith upon request.

DATE:



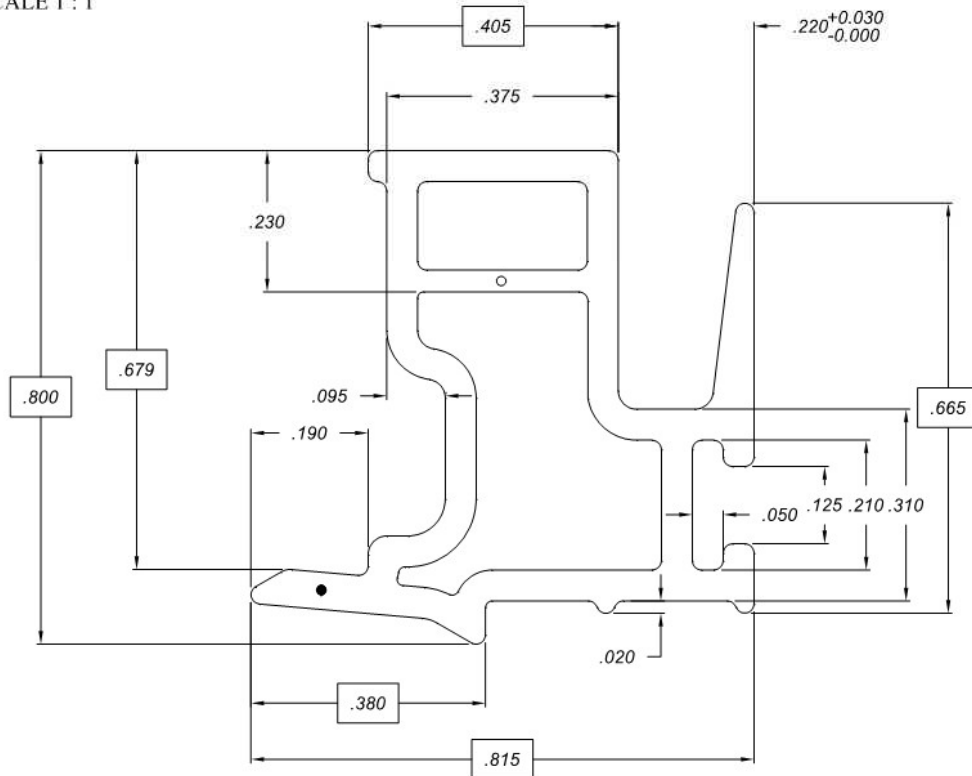
APPLICATIONS DETAIL  
 SCALE 1 : 1

#6402

EXPOSED  
 CAPSTOCK / LAMINATED  
 OR PAINTED SURFACE



Full Scale



WALL THICKNESS: UNLESS SPECIFIED  
 NOMINAL = 0.050"  
 ● = 0.060"  
 ○ = 0.035"

RADIUS NOTES: unmarked = 0.015" / a = 0.010" / b = 0.020" / c = 0.030" / d = 0.060" / f = full / s = Sharp

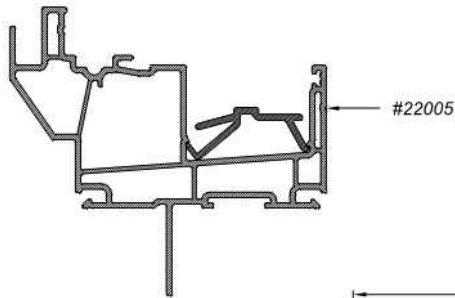
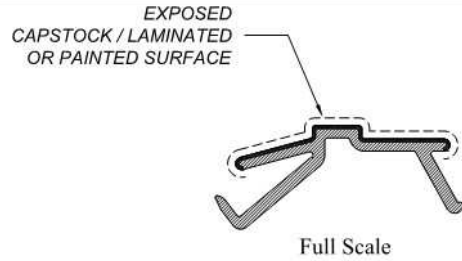
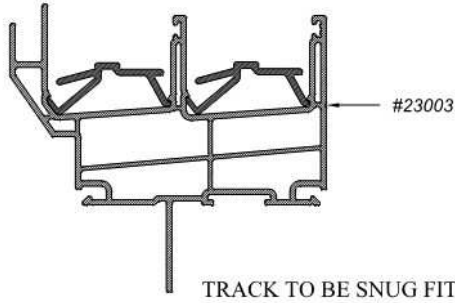
TOLERANCES: UNLESS SPECIFIED			
X.XX = PLUS/MINUS 0.015"			
X.XXX = PLUS/MINUS 0.010"			
X.XXXX = PLUS/MINUS 0.005"			
<b>Keeper Glass Stop "B"</b>			
<b>Part Drawing</b>			
COLOUR: <b>As specified</b>	REVISION: <b>A3 - Revised die &amp; dwg number.</b>	DIE NUMBER: <b>50102</b>	DWG NO.: <b>GS50102</b>
MATERIAL: <b>Rigid P.V.C.</b>	SCALE: <b>4 : 1</b>	DRAWN BY:	CUSTOMER PART NUMBER: <b>DATE: 06-01-2025</b>

APPROVED BY:

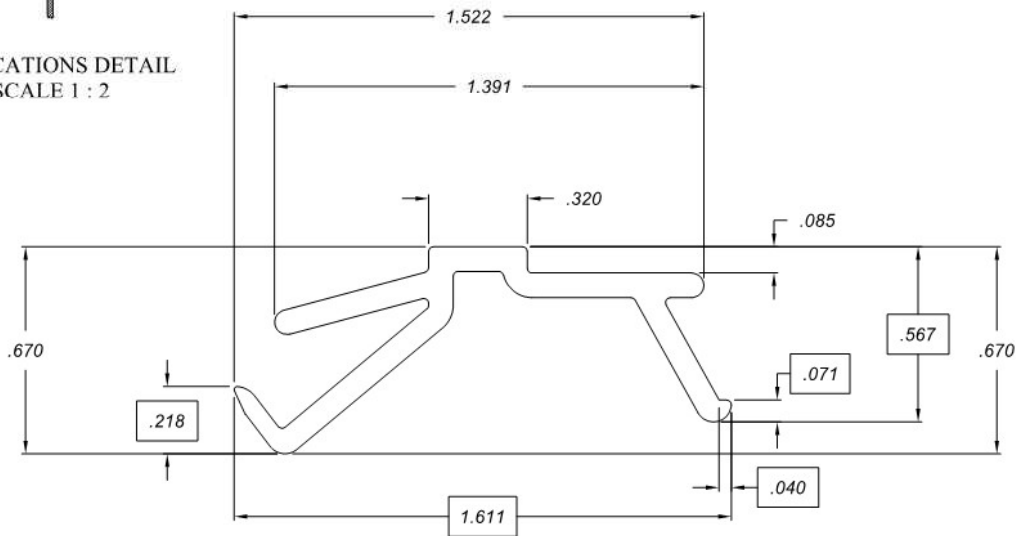


This document and the information contained is owned by and proprietary to GRACIOUS LIVING INNOVATIONS. By receipt hereof, the holder agrees not to use the information, disclose it to any third parties nor reproduce this document without the prior written consent of GRACIOUS LIVING INNOVATIONS, and agrees to return the document forthwith upon request.

DATE:



APPLICATIONS DETAIL  
 SCALE 1 : 2



WALL THICKNESS: UNLESS SPECIFIED  
 NOMINAL = 0.080"

RADIUS NOTES: unmarked = 0.015" / a = 0.010" / b = 0.020" / c = 0.030" / d = 0.060" / f = full / s = Sharp

TOLERANCES: UNLESS SPECIFIED X.XX = PLUS/MINUS 0.015" X.XXX = PLUS/MINUS 0.010" X.XXXX = PLUS/MINUS 0.005"			
<b>Slider Track                  Part Drawing</b>			
COLOUR: As specified	REVISION: A4 - Revised wall thickness note to match actual part	DIE NUMBER: 42001	DWG NO.: ACC42001
MATERIAL: Rigid P.V.C.	SCALE: 2 : 1	DRAWN BY:	CUSTOMER PART NUMBER: DATE: 06-01-2025